

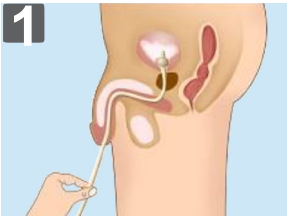
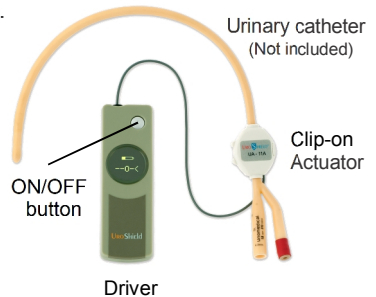
UROSHIELD[®] QUICK GUIDE

Please read the complete UroShield manual before using the device and pay attention to provided warnings.

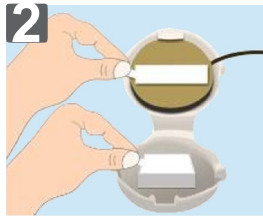
The UroShield can be used with Foley catheters made of any material in sized 14 - 22 French, up to 30 days

Important Notes

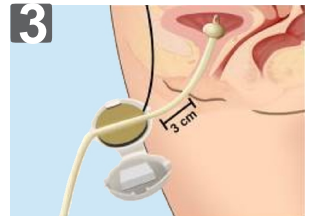
- UroShield should only be installed on a newly inserted catheter
- The UroShield should not be used to treat an active urinary infection



Gently pull on the catheter until you feel slight resistance.



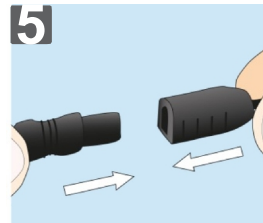
Peel off the protective strips from the inside of both halves of the actuator.



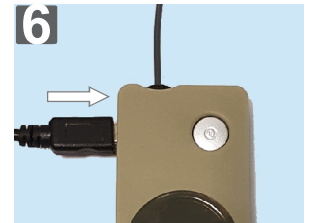
Place the actuator on the catheter about 3 cm from the point the catheter exits the body, with the connection cable towards the patient.



Align the catheter with the actuator grooves and close it until both sides snap together.



Connect the actuator cable to the device cable in correct alignment.



Connect the supplied charger to the driver charging port and plug the charger to the mains socket.

7 Press the device ON/OFF button for about 2 seconds until beeping sound is heard. The device requires a few seconds to initialize and then displays the information screen.

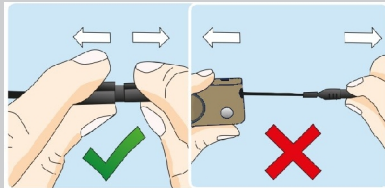
UROSHIELD[®] QUICK GUIDE

UroShield should be used continuously connected to a main power socket.
For portability disconnect from power socket to use battery for up to 6 hours.
A visual and audible alert will indicate when battery capacity drops below 0.5-hour.

Note: Driver works intermittently in cycles of 15 min active followed by 5 min Idle.

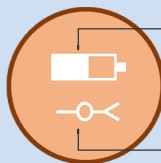
Disconnecting the Actuator

Disconnect the actuator by pulling the connector sides apart as shown



Working mode

Screensaver screen



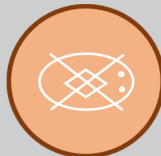
Battery level



Actuator working

Warning screens

Actuator disconnected or damaged



Battery blinking – below 10% charge - Reconnect to mains

